

## About SWAN

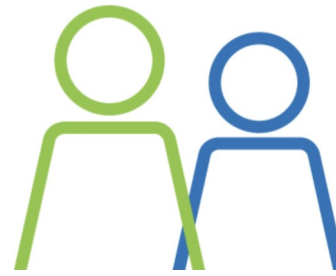
South West Advocacy Network (SWAN) is a charity specialising in delivering independent advocacy.

We have developed a model which ensures everyone, including the most vulnerable members of our communities, have the same rights and opportunities as their fellow citizens.

## Our Pan Dorset Service

Our Pan Dorset Advocacy Service is independent, free at the point of delivery, confidential and non-judgemental.

Alongside our core service we will be co-producing and delivering Self-Advocacy Workshops, empowering individuals who do not meet the criteria for statutory advocacy to develop self-advocacy skills.



## Contact us

**Tel:** 03333 447928

**Email:** [dorset@swanadvocacy.org.uk](mailto:dorset@swanadvocacy.org.uk)

**Web:** [www.swanadvocacy.org.uk/dorset](http://www.swanadvocacy.org.uk/dorset)

**Address:**

South West Advocacy Network  
Pan Dorset Advocacy Service  
c/o Hi Point  
Thomas Street  
Taunton  
Somerset  
TA2 6HB



@SouthWestAdvocacyNetwork



@SWANadvocacy



@SouthWestAdvocacyNetwork

We can provide this information in different languages and formats, including easy read.

Registered Charity Number: 1125679

Company Number: 65992429



## Pan Dorset

## Independent

## Advocacy Service

working across Dorset,  
Bournemouth, Christchurch  
& Poole



**Tel:** 03333 447928

**Email:** [dorset@swanadvocacy.org.uk](mailto:dorset@swanadvocacy.org.uk)

**Web:** [www.swanadvocacy.org.uk/iow](http://www.swanadvocacy.org.uk/iow)

## Independent Mental Health Act Advocacy

**Who it is for:** Individuals who are subject to the Mental Health Act, including people who are:

- Detained in hospital or subject to Section 17 leave (and other defined sections of the Mental Health Act)
- Subject to Guardianship
- Subject to a Community Treatment Order

## Independent Mental Capacity Act Advocacy

**Who it is for:** Individuals over the age of 16, without an appropriate family member or friend to represent their views, who do not have capacity at the time to make decisions. Including

- Change of Accommodation
- Serious Medical Treatment
- Section 42 Safeguarding
- Litigation Friend
- Deprivation of Liberty (DoLS)
- Rule 1.2 Representative
- Relevant Persons Representative

## Care Act Advocacy

**Who it is for:** Individuals, without someone appropriate to support them, who are deemed to have substantial difficulty being involved in one of the following processes

- Social Care Needs Assessment
- Carers Assessment
- Care and Support Planning
- Appealing Local Authority decisions
- Section 42 Safeguarding Enquires

## Continuing Healthcare Advocacy

**Who it is for:** This specialist service, which also provides other advocacy described within this leaflet, is for individuals over the age of 18 or their representatives (such as family members) who have questions about the long-term care funding system, are preparing for a Continuing Healthcare assessment or wish to challenge a decision.

## Advocacy for Parents during Care Proceedings

**Who it is for:** Parents with additional needs such as a learning disability who require advocacy during the child protection process.

This includes parents who do not meet the statutory advocacy eligibility criteria but who would have substantial difficulty to be involved with processes when important decisions about their life are being made.

## Carers Advocacy

**Who it is for:** Unpaid carers aged 16 and over who require independent support and advocacy to obtain the care and support they need to continue in their caring role

## Generic Advocacy

**Who it is for:** Individuals from specific groups, e.g. parents with learning disabilities, carers and people with mental health issues, who meet our criteria and require advocacy or self-advocacy coaching.

